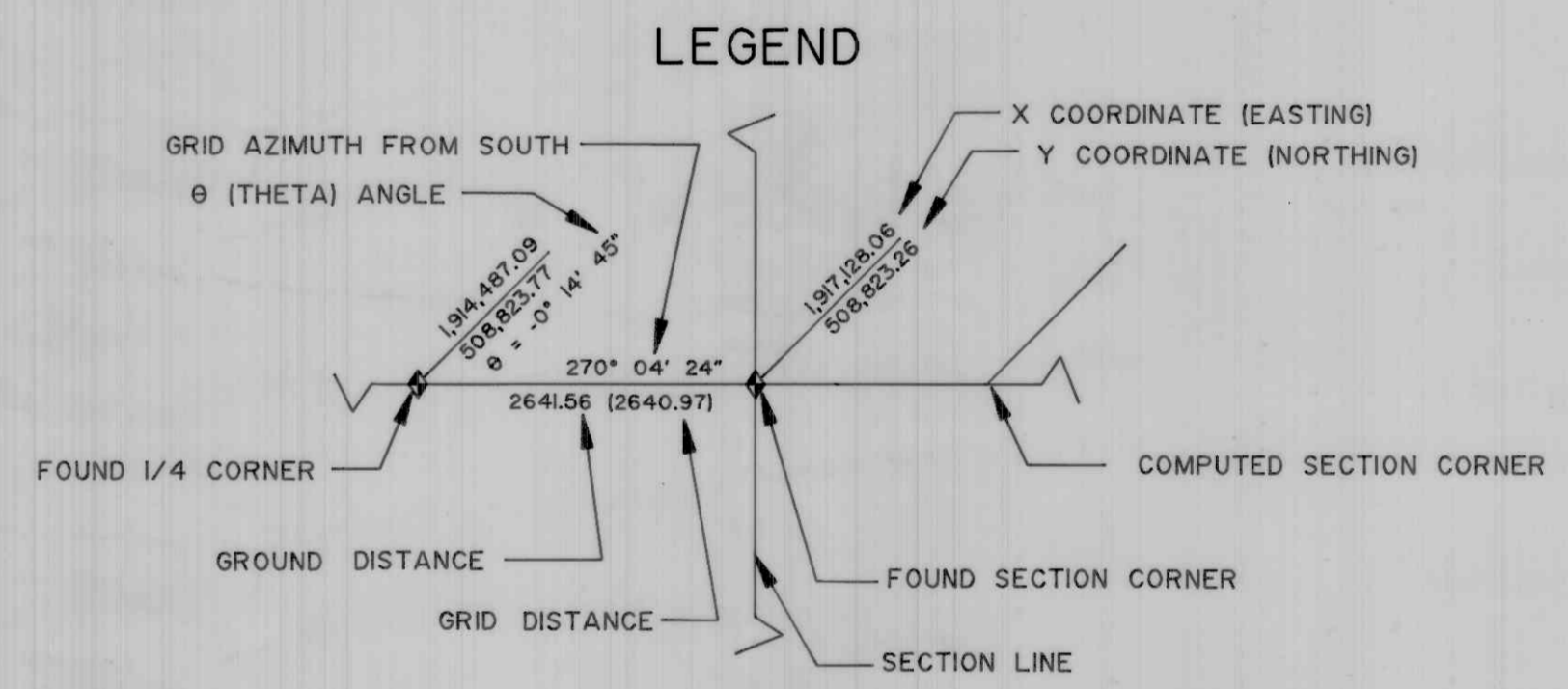


STATE COORDINATE
8
DEPENDENT RESURVEY
OF A PORTION OF
TOWNSHIP NORTH, RANGE WEST
Salt Lake Base and Meridian

ALL AZIMUTHS AND COORDINATES SHOWN ARE BASED ON THE UTAH STATE COORDINATE SYSTEM, LAMBERT CONFORMAL PROJECTION, UTAH NORTH ZONE, NORTH AMERICAN 1927 DATUM.
METHODS AND SPECIFICATIONS CONFORM TO SP 235, THE UTAH STATE COORDINATE SYSTEM, AND THE UNITED STATES COAST AND GEODETIC SURVEY.
THE COORDINATES SHOWN WERE TRANSFERRED BY TRAVERSE OR TRIANGULATION FROM THE FOLLOWING UNITED STATES COAST AND GEODETIC SURVEY STATIONS:



SECTION TIES, ORIGINAL GENERAL LAND OFFICE OR BUREAU OF LAND MANAGEMENT SURVEY NOTES, TRAVERSES, CALCULATIONS, TIES TO TRAVERSE POINTS, ETC. USED IN OBTAINING THIS INFORMATION ARE AVAILABLE IN THE CACHE COUNTY SURVEYOR'S OFFICE.

ALL SECTION CORNERS WERE ESTABLISHED AND VERIFIED PRIOR TO RESURVEY WORK ACCORDING TO THE RULES ESTABLISHED BY THE BUREAU OF LAND MANAGEMENT.

GRID AZIMUTHS AND DISTANCES BETWEEN CORNERS NOT SET ARE FOR REFERENCE ONLY.

OFFICE OF THE CACHE COUNTY SURVEYOR

THE INFORMATION SHOWN ON THIS PLAT IS IN STRICT CONFORMITY TO THE FIELD NOTES ON FILE IN THE OFFICE OF THE COUNTY SURVEYOR, HAVING BEEN EXECUTED IN ACCORDANCE WITH THE REQUIREMENTS OF THIS OFFICE, AND THIS PLAT IS HEREBY APPROVED AND ACCEPTED THIS _____ DAY OF _____, 19__.

CACHE COUNTY SURVEYOR

REVISIONS & ADDITIONS				
NO	DATE	BY	NOTES	APPROVED

NOTES

- GEODETIC AZIMUTH = GRID AZIMUTH + θ
- θ = ANGLE BETWEEN GRID NORTH AND GEODETIC MERIDIAN
- GRID DISTANCE \times = GROUND DISTANCE
- ◆ FOUND CORNER